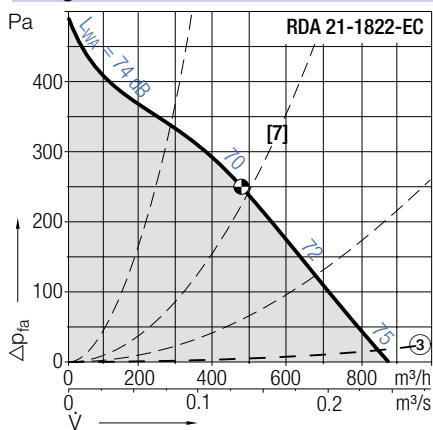


RDA 21-1819/-1822

RDA <i>genovent</i>		Tekniska data						Technical Data					
ur- vor	Pol- tal	Spänning/ anslutning	Frek- vens	Varvtal	Max. effekt- förbrukning	Märk- ström	Startström/ Märkström	V_{max}	L_{WA8} vid V_{max}	onden- sator	Skyddsklass/ Isolationskl.	Vikt RDA 21	Media- temp.
Curves	Poles	Voltage/ Connection	Fre- quency	Speed	Max. power consumption	Nominal current	Starting/Full load current	V_{max}	L_{WA8} at V_{max}	Capa- citor	Protection/ Temp. class	Weight RDA 21	Media temp.
DA 21-		V	Hz	v/min	kW	A		m ³ /h	dB	μF		kg	°C
1822-EC• [7]	-	230, 1~	50/60	2450	0.084	0.76	-	880	75	-	IP44/B	5.0	-20...+60

• (även) steglöst varvtalsreglerbar med spänning | • (also) stepless speed controllable by tension variation

RDA <i>genovent</i>	Kurvor	Curves	$\rho_1=1.15 \text{ kg/m}^3$
---------------------	--------	--------	------------------------------



RDA <i>genovent</i>		Tillbehör				Accessories		
	Arbets- brytare	Motorskydds- brytare	Transformator 7-stegs	Transformator 5-stegs	Vridtyristor	Varvtalsregl. elektronisk	Varvtalsregl. mikroprocessor	Varvtalsregl. elektronisk
	Isolator	Motor protection unit	Transformer 7 taps	Transformer 5-steps	Speed regulator electronic	Speed regulator electronic	Speed regulator micro processor	Speed controller electronic
DA 21-	ESH	ESM	ETO	ETH	EPH	EPA	EPA	EPA
1822-4E•	21-0030-22	⑤	10-0018-5E	31-0020-5E	03-0010-5E	-	93-0023-5E	-

RDA 21-1819/-1822

RDA genovent



DA 21- genovent

Gebhardt ytterrotormotor med monterat radialfläkt hjul.

Tillbehör / Index

- ② Lutning upp till 45° i steg om 5° är möjlig
- ③ Tryckfall i spjäll
- ⑤ På dessa typer av motorer ligger termokontakterna **internt** i serie med lindningen. Skulle motorn uppnå gränstemperaturen, kopplar kontakterna från motorn omedelbart. Någon motorskydds brytare behövs inte.

DA 21- genovent

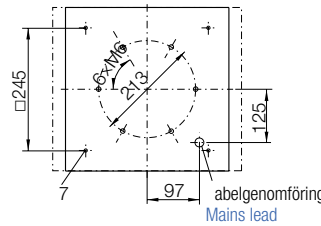
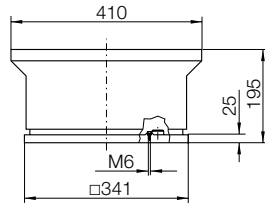
Gebhardt external rotor motor with impeller fitted directly.

Accessories / Index

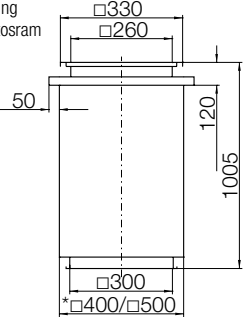
- ② inclination in 5° steps up to 45° possible
- ③ Pressure loss at back draught damper
- ⑤ These fan types have motors with thermal contacts connected **internally** in series with the winding. They shut down the motor directly a preset temperature limit is reached. Motor protection units are not needed.

Mått i mm, vi förbehåller oss rätten till ändringar.

Dimensions in mm, Subject to change.



G-200 [St]
Takgenomföring inkl. fällbar stosram
*EI30/EI60
Roof duct with Foldable frame
*EI30/EI60

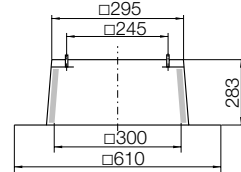


Tillbehör

ZBS 01-0031 [Al] 3 kg

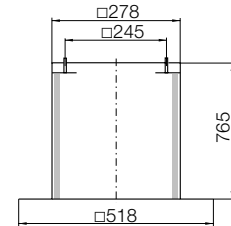
ZBS 20-0031 [St] 6 kg

Stos för platta tak
Flat roof upstand



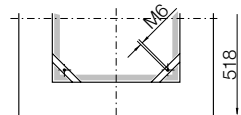
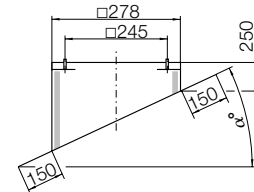
ZBS 23-0031 [St] 10 kg

Stos för platta tak, hög
Flat roof upstand tall



ZBS 09-0031-② [Al] 4 kg

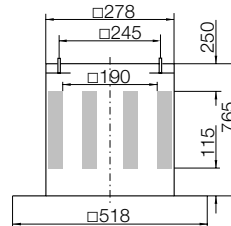
Stos för snedtak
Inclined roof upstand



ZDS 01-0028 [Al] 11 kg

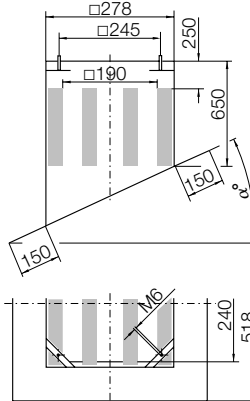
ZDS 20-0028 [St] 15 kg

Stosljuddämpare
Upstand silencer



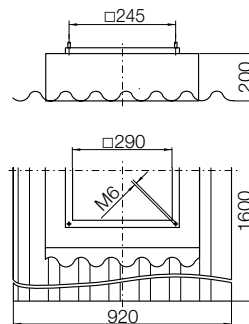
ZDS 09-0028-② [Al] 11 kg

Stosljuddämpare för snedtak
Inclined roof upstand silencer



ZBS 11-0031 [GF] 11 kg

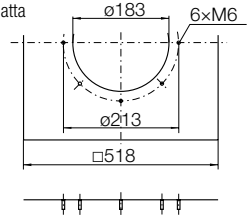
Stos för korrugerat tak
Soaker sheet WDS



Accessories

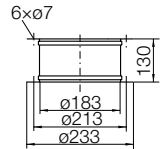
ZBU 01-0028-18 [St] 2 kg

Anslutningsplatta
Connection plate



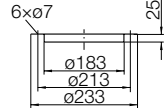
ZKE 11-0180 0.7 kg

Dukstos, inlopp
Inlet connection (flexible)



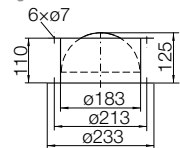
ZKF 11-0180 0.3 kg

Motfläns, inlopp
Mating flange



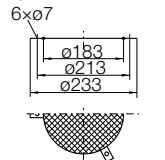
ZLK 01-0180 4 kg

Självstängande backspjäll
Automatic shutter



ZSG 04-0180 0.1 kg

Inloppsgaller
Mesh inlet guard

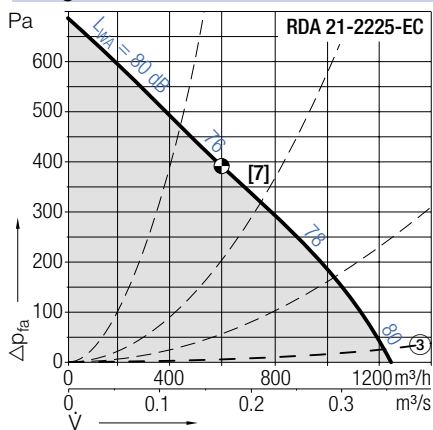


RDA 21-2225

RDA <i>genovent</i>		Tekniska data						Technical Data						
ur- vor	Pol- tal	Spänning/ anslutning	Frek- vens	Varvtal	Max. effekt- förbrukning	Märk- ström	Startström/ Märkström	V_{max}	L_{WA8} vid V_{max}	onden- sator	Skyddsklass/ Isolationskl.	Vikt RDA 21	Media- temp.	
Curves	Poles	Voltage/ Connection	Fre- quency	Speed	Max. power consumption	Nominal current	Starting/Full load current	V_{max}	L_{WA8} at V_{max}	Capa- citor	Protection/ Temp. class	Weight RDA 21	Media temp.	
DA 21-		V	Hz	v/min	kW	A		m ³ /h	dB	μF		kg	°C	
2225-EC•	[7]	-	230, 1~	50/60	2620	0.17	1.42	-	1240	80	-	IP44/B	8.0	-20...+60

• (även) steglöst varvtalsreglerbar med spänning | • (also) stepless speed controllable by tension variation

RDA <i>genovent</i>	Kurvor	Curves	$\rho_1=1.15 \text{ kg/m}^3$
---------------------	--------	--------	------------------------------



RDA <i>genovent</i>		Tillbehör				Accessories			
	Arbets- brytare	Motorskydds- brytare	Transformator 7-stegs	Transformator 5-stegs	Vridtyristor	Varvtalsregl. elektronisk	Varvtalsregl. mikroprocessor	Varvtalsregl. elektronisk	Potenti- ometer
	Isolator	Motor protection unit	Transformer 7 taps	Transformer 5-steps	Speed regulator electronic	Speed regulator electronic	Speed regulator micro processor	Speed controller electronic	Speed regulator module
DA 21-	ESH	ESM	ETO	ETH	EPH	EPA	EPA	EPA	EGH
2225-EC•	21-0030-22	-	-	-	-	-	-	-	EGH 01

RDA 21-2225

RDA genovent



DA 21- genovent

Gebhardt ytterrotormotor med monterat radialfläkt hjul.

Tillbehör / Index

- ② Lutning upp till 45° i steg om 5° är möjlig
- ③ Tryckfall i spjäll
- ⑤ På dessa typer av motorer ligger termokontakterna **internt** i serie med lindningen. Skulle motorn uppnå gränstemperaturen, kopplar kontakterna från motorn omedelbart. Någon motorskydds brytare behövs inte.

DA 21- genovent

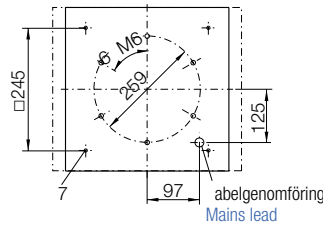
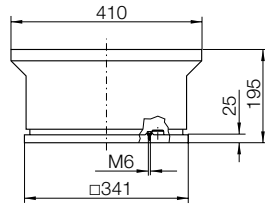
Gebhardt external rotor motor with impeller fitted directly.

Accessories / Index

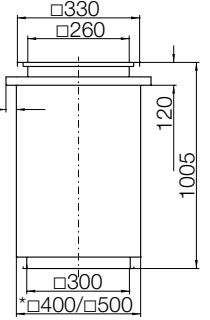
- ② inclination in 5° steps up to 45° possible
- ③ Pressure loss at back draught damper
- ⑤ These fan types have motors with thermal contacts connected **internally** in series with the winding. They shut down the motor directly a preset temperature limit is reached. Motor protection units are not needed.

Mått i mm, vi förbehåller oss rätten till ändringar.

Dimensions in mm, Subject to change.



G-200 [St]
Takgenomföring
inkl. fällbar stosram
*EI30/EI60
Roof duct
with Foldable
frame
*EI30/EI60

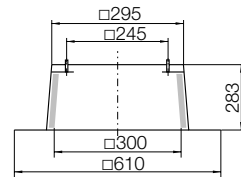


Tillbehör

ZBS 01-0031 [Al] 3 kg

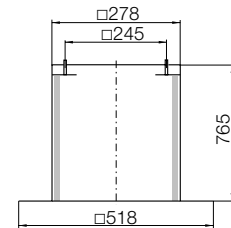
ZBS 20-0031 [St] 6 kg

Stos för platta tak
Flat roof upstand



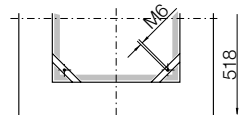
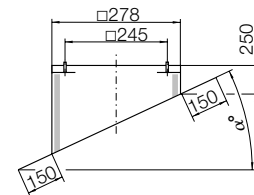
ZBS 23-0031 [St] 10 kg

Stos för platta tak, hög
Flat roof upstand tall



ZBS 09-0031-② [Al] 4 kg

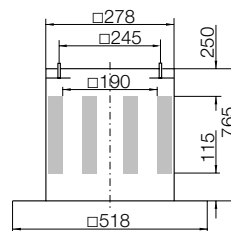
Stos för snedtak
Inclined roof upstand



ZDS 01-0028 [Al] 11 kg

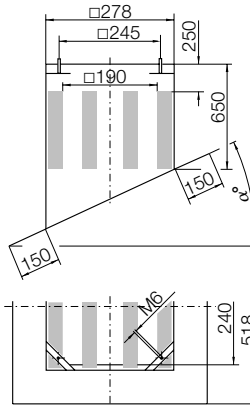
ZDS 20-0028 [St] 15 kg

Stosljuddämpare
Upstand silencer



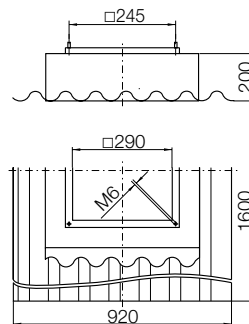
ZDS 09-0028-② [Al] 11 kg

Stosljuddämpare för snedtak
Inclined roof upstand silencer



ZBS 11-0031 [GF] 11 kg

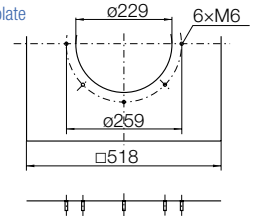
Stos för korrugerat tak
Soaker sheet WDS



Accessories

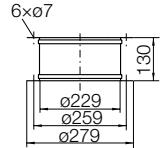
ZBU 01-0028-22 [St] 2 kg

Anslutningsplatta
Connection plate



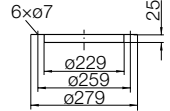
ZKE 13-0225 1.0 kg

Dukstos, inlopp
Inlet connection
(flexible)



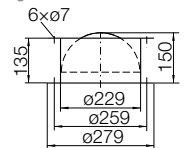
ZKF 13-0225 0.5 kg

Motfläns, inlopp
Mating flange



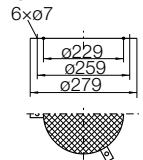
ZLK 03-0225 5 kg

Självstängande
backspjäll
Automatic
shutter



ZSG 04-0225 0.2 kg

Inloppsgaller
Mesh inlet guard

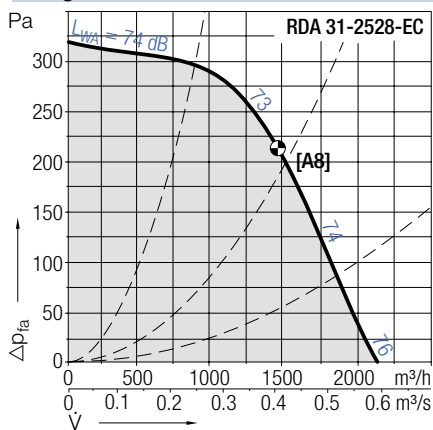


RDA 31-/32-2528

RDA <i>genovent</i>		Tekniska data (V_{max} / L_{WAB} giltig för RDA 31)						Technical Data (V_{max} / L_{WAB} valid to RDA 31)						
r- vor	Pol- tal	Spänning/ ansl tning	Frek- vens	Varvtal	Max. effekt- förbr kning	Märk- ström	Startström/ Märkström	V_{max}	L_{WAB} vid V_{max}	onden- sator	Skydds- Isolationskl.	Vikt 31/32	Media- temp.	
C rves	Poles	Voltage/ Connection	Fre- q ency	Speed	Max. power cons mption	Nominal c rrent	Starting/F ll load c rrent	V_{max}	L_{WAB} at V_{max}	Capa- citor	Protection/ Temp. class	Weight 31/32	Media temp.	
A 31-/32-	V	V	Hz	v/min	kW	A		m ³ /h	dB	μF		kg	°C	
2528-EC•	[A8]	-	230, 1~	50/60	1820	0.205	1.10	-	2130	76	-	IP44/B	19/26	-20...+40

• (även) steglöst varvtalsreglerbar med spänning | • (also) stepless speed controllable by tension variation

RDA <i>genovent</i>	Kurvor	Curves	$\rho_1=1.15 \text{ kg/m}^3$
---------------------	--------	--------	------------------------------



RDA <i>genovent</i>	Tillbehör				Accessories				
Arbets- brytare	Motorskydds- brytare	Transformator 7-stegs	Transformator 5-stegs	Vridtyristor	Varvtalsregl. elektronisk	Varvtalsregl. mikroprocessor	Varvtalsregl. elektronisk	Potential- meter	
Isolator	Motor protection nit	Transformer 7 taps	Transformer 5-steps	Speed reg lator electronic	Speed reg lator electronic	Speed reg lator micro processor	Speed controller electronic	Speed reg lator mod le	
A 31-/32-ESH	ESM	ETO	ETH	EPH	EPA	EPA	EPA	EGH	
2528-EC•	21-0030-22	-	-	-	-	-	-	EGH 01	

RDA 31-/32-2528

RDA genovent



A 31-



A 32-

Lj dämpat tförande
Noise atten ated version

A 31- genovent

Gebhardt ytterrotormotor med monterat radialfläktkj l. Alla EC-typerna med integrerad komm teringsenhet.

A 32- genovent

Extra lj dabsorberande beklädnad för red cering av lj d-effektnivån med ca 7 dB(A) på avl ftsidan.

Flödet red ceras vid samma tryckökning med 5-10 % jämfört med typ RDA 31.

Tillbehör / Index

- ② L trning pp till 45° i steg om 5° är möjlig
- ⑥ En skydds nkktion vid högt varvtal garanteras endast om en Dahlander-brygga finns

A 31- genovent

Gebhardt external rotor motor with impeller fitted directly. All EC-types with integrated Comm tation nit.

A 32- genovent

Additionally eq ipped with so nd absorbing lining for A-so nd power level red ction of abo t 7 dB at discharge. The flow rate to RDA 31 will be red ced of 5-10 % at same press re rise.

Accessories / Index

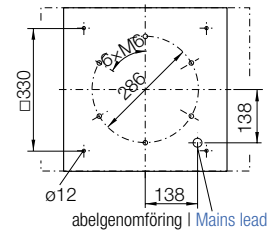
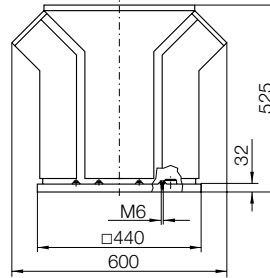
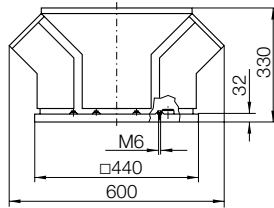
- ② inclination in 5° steps p to 45° possible
- ⑥ A protection for high speed is only active if Dahlander bridge is on place

Mått i mm, vi förbehåller oss rätten till ändringar.

A 31-2528-..

A 32-2528-..

Dimensions in mm, Subject to change.



Tillbehör

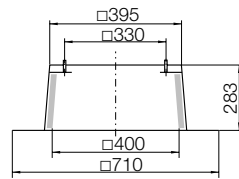
ZBS 01-0040 [Al] 4 kg

ZBS 20-0040 [St] 8 kg

Stos för platta tak

Flat roof

pstand

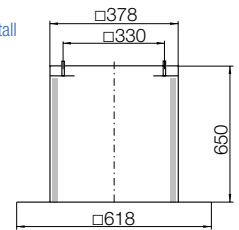


ZBS 23-0040 [St] 10 kg

Stos för platta tak, hög

Flat roof

pstand tall

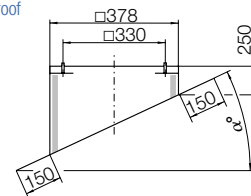


ZBS 09-0040-② [Al] 5 kg

Stos för snedtak

Inclined roof

pstand

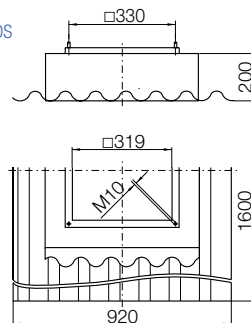


ZBS 11-0040 [GF] 11 kg

Stos för korr gerat tak

Soaker

sheet WDS



Accessories

Z S 01-0040 [Al] 13 kg

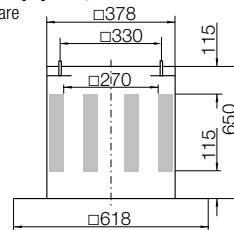
Z S 20-0040 [St] 18 kg

Stoslj ddämpare

Upstand

silencer

①



Z S 09-0040-② [Al] 13 kg

Stoslj ddämpare

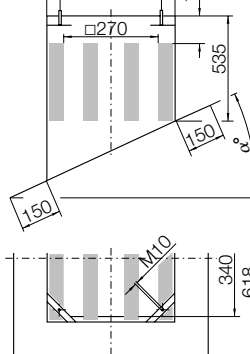
för snedtak

Inclined roof

pstand

silencer

①



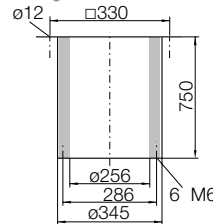
Z 30-0250 12 kg

Lj ddämpare

inloppssida

Inlet

silencer



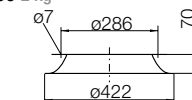
ZK 01-0250 2 kg

Inloppskona

med fläns

Flanged

inlet cone

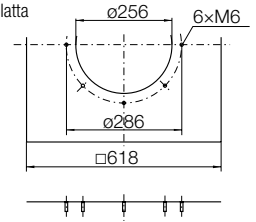


ZBU 01-0040-25 [St] 4 kg

Ansl trningsplatta

Connection

plate

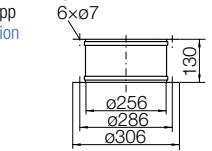


ZKE 11-0250 1.4 kg

D kstos, inlopp

Inlet connection

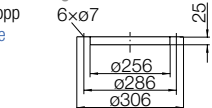
(flexible)



ZKF 11-0250 0.7 kg

Motfläns, inlopp

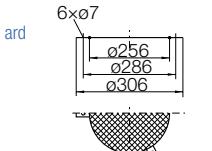
Mating flange



ZSG 04-0250 0.4 kg

Inloppsgaller

Mesh inlet g ard



G-250 [St]

Takgenomföring

inkl. fällbar stosram

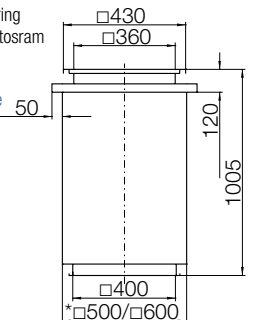
*EI30/EI60

Roof d ct

with Foldable

frame

*EI30/EI60

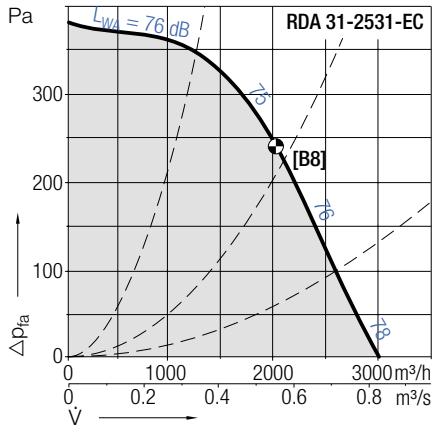


RDA 31-/32-2531

RDA <i>genovent</i>		Tekniska data (V_{max} / L_{WAB} giltig för RDA 31)						Technical Data (V_{max} / L_{WAB} valid to RDA 31)						
r- vor	Pol- tal	Spänning/ ansl tning	Frek- vens	Varvtal	Max. effekt- förbr kning	Märk- ström	Startström/ Märkström	V_{max}	L_{WAB} vid V_{max}	onden- sator	Skyddskl./ Isolationskl.	Vikt 31/32	Media- temp.	
C rves	Poles	Voltage/ Connection	Fre- q ency	Speed	Max. power cons mption	Nominal c rrent	Starting/F ll load c rrent	V_{max}	L_{WAB} at V_{max}	Capa- citor	Protection/ Temp. class	Weight 31/32	Media temp.	
A 31-/32-		V	Hz	v/min	kW	A		m³/h	dB	μF		kg	°C	
2531-EC	[B8]	-	230, 1~	50/60	1735	0.31	1.60	-	3000	78	-	IP44/B	21/-	-20...+40

• (även) steglöst varvtalsreglerbar med spänning | • (also) stepless speed controllable by tension variation

RDA <i>genovent</i>	Kurvor	Curves	$\rho_1=1.15 \text{ kg/m}^3$
---------------------	--------	--------	------------------------------



RDA <i>genovent</i>		Tillbehör				Accessories			
Arbets- brytare	Motorskydds- brytare	Transformator 7-stegs	Transformator 5-stegs	Vridtyristor	Varvtalsregl. elektronisk	Varvtalsregl. mikroprocessor	Varvtalsregl. elektronisk	Potential- meter	
Isolator	Motor protection nit	Transformer 7 taps	Transformer 5-steps	Speed reg lator electronic	Speed reg lator electronic	Speed reg lator micro processor	Speed controller electronic	Speed reg lator mod le	
A 31-/32-ESH	ESM	ETO	ETH	EPH	EPA	EPA	EPA	EGH	
2531-EC	21-0030-22	-	-	-	-	-	-	EGH 01	

RDA 31-/32-2531

RDA genovent



A 31-



A 32-

Lj dämpat tförande
Noise atten ated version

A 31- genovent

Gebhardt ytterrotormotor med monterat radialfläktkj l. Alla EC-typerna med integrerad komm teringsenhet.

A 32- genovent

Extra lj dabsorberande beklädnad för red cering av lj d-effektnivån med ca 7 dB(A) på avl ftsidan.

Flödet red ceras vid samma tryckökning med 5-10 % jämfört med typ RDA 31.

Tillbehör / Index

- ② L trning pp till 45° i steg om 5° är möjlig
- ⑥ En skydds nktion vid högt varvtal garanteras endast om en Dahlander-brygga finns

A 31- genovent

Gebhardt external rotor motor with impeller fitted directly. All EC-types with integrated Comm tation nit.

A 32- genovent

Additionally eq ipped with so nd absorbing lining for A-so nd power level red ction of abo t 7 dB at discharge. The flow rate to RDA 31 will be red ced of 5-10 % at same press re rise.

Accessories / Index

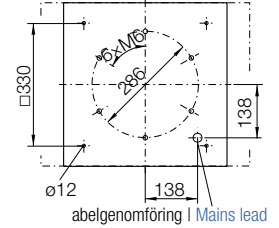
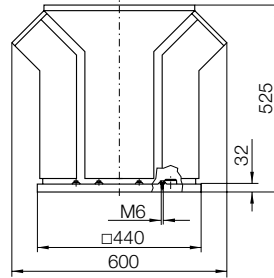
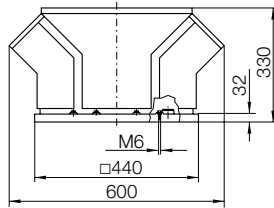
- ② inclination in 5° steps p to 45° possible
- ⑥ A protection for high speed is only active if Dahlander bridge is on place

Mått i mm, vi förbehåller oss rätten till ändringar.

Dimensions in mm, Subject to change.

A 31-2531-..

A 32-2531-..



Tillbehör

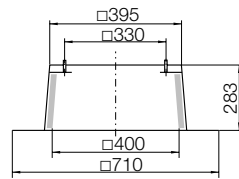
ZBS 01-0040 [Al] 4 kg

ZBS 20-0040 [St] 8 kg

Stos för platta tak

Flat roof

pstand

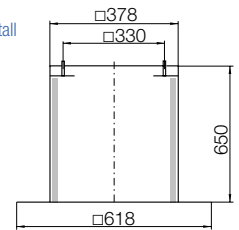


ZBS 23-0040 [St] 10 kg

Stos för platta tak, hög

Flat roof

pstand tall

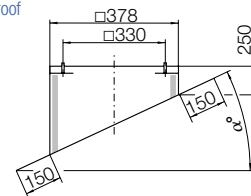


ZBS 09-0040-② [Al] 5 kg

Stos för snedtak

Inclined roof

pstand

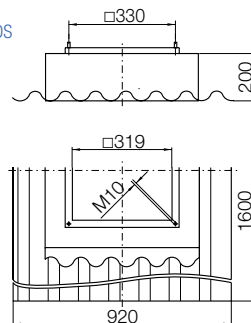


ZBS 11-0040 [GF] 11 kg

Stos för korr gerat tak

Soaker

sheet WDS



Accessories

Z S 01-0040 [Al] 13 kg

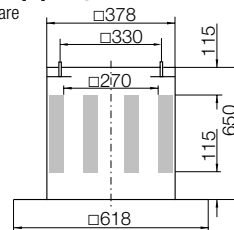
Z S 20-0040 [St] 18 kg

Stoslj ddämpare

Upstand

silencer

①



Z S 09-0040-② [Al] 13 kg

Stoslj ddämpare

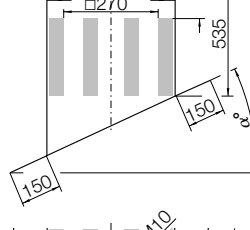
för snedtak

Inclined roof

pstand

silencer

①



ZBU 01-0040-25 [St] 4 kg

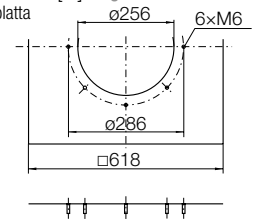
Ansl tringsplatta

Connection

plate

abelgenomföring | Mains lead

①



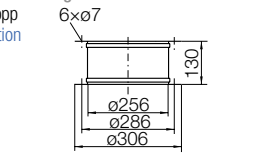
ZKE 11-0250 1.4 kg

D kstos, inlopp

Inlet connection

(flexible)

①

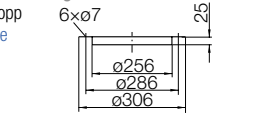


ZKF 11-0250 0.7 kg

Motfläns, inlopp

Mating flange

①

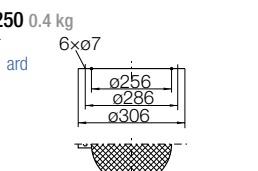


ZSG 04-0250 0.4 kg

Inloppsgaller

Mesh inlet g ard

①



Z 30-0250 12 kg

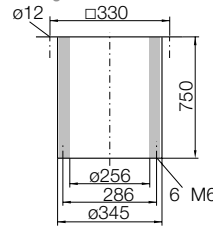
Lj ddämpare

inloppssida

Inlet

silencer

①



ZK 01-0250 2 kg

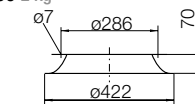
Inloppskona

med fläns

Flanged

inlet cone

①



G-250 [St]

Takgenomföring

inkl. fällbar stosram

*EI30/EI60

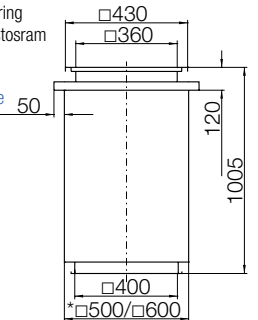
Roof d ct

with Foldable

frame

*EI30/EI60

①

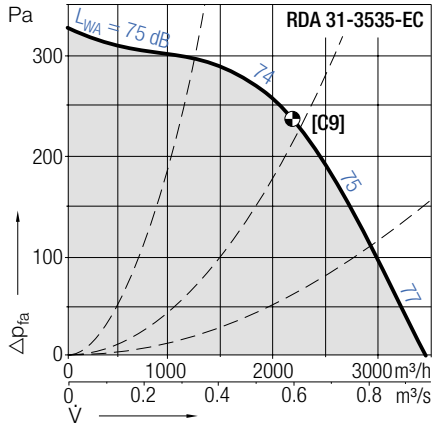


RDA 31-/32-3535

RDA <i>genovent</i>		Tekniska data (V_{max} / L_{WAB} giltig för RDA 31)						Technical Data (V_{max} / L_{WAB} valid to RDA 31)					
r- vor	Pol- tal	Spänning/ ansl tning	Frek- vens	Varvtal	Max. effekt- förbr kning	Märk- ström	Startström/ Märkström	V_{max}	L_{WAB} vid V_{max}	onden- sator	Skyddskl./ Isolationskl.	Vikt 31/32	Media- temp.
C rves	Poles	Voltage/ Connection	Fre- q ency	Speed	Max. power cons mption	Nominal c rrent	Starting/F ll load c rrent	V_{max}	L_{WAB} at V_{max}	Capa- citor	Protection/ Temp. class	Weight 31/32	Media temp.
A 31 /32	V	V	Hz	v/min	kW	A		m ³ /h	dB	μF		kg	°C
3535 EC• [C9]	-	230, 1~	50/60	1460	0.34	1.80	-	3460	77	-	IP44/B	28/-	-20...+40

• (även) steglöst varvtalsreglerbar med spänning | • (also) stepless speed controllable by tension variation

RDA <i>genovent</i>	Kurvor	Curves	$\rho_1=1.15 \text{ kg/m}^3$
---------------------	--------	--------	------------------------------



RDA <i>genovent</i>		Tillbehör				Accessories			
Arbets- brytare	Motor- skydds- brytare	Transformator 7-stegs	Transformator 5-stegs	Vridtyristor	Varvtalsregl. elektronisk	Varvtalsregl. mikroprocessor	Varvtalsregl. elektronisk	Potential- meter	
Isolator	Motor protection nit	Transformer 7 taps	Transformer 5-steps	Speed reg lator electronic	Speed reg lator electronic	Speed reg lator micro processor	Speed controller electronic	Speed reg lator mod le	
A 31 /32 ESH	ESM	ETO	ETH	EPH	EPA	EPA	EPA	EGH	
3535 EC•	21-0030-22	-	-	-	-	-	-	EGH 01	

RDA 31-/32-3535

RDA genovent



A 31-



A 32-

Lj dämpat tförande
Noise atten ated version

A 31- genovent

Gebhardt ytterrotormotor med monterat radialfläktkj l. Alla EC-typerna med integrerad komm teringsenhet.

A 32- genovent

Extra lj dabsorberande beklädnad för red cering av lj d-effektnivån med ca 7 dB(A) på avl ftsidan.

Flödet red ceras vid samma tryckökning med 5-10 % jämfört med typ RDA 31.

Tillbehör / Index

- ② L trning pp till 45° i steg om 5° är möjlig
- ⑥ En skydds nktion vid högt varvtal garanteras endast om en Dahlander-brygga finns

A 31- genovent

Gebhardt external rotor motor with impeller fitted directly. All EC-types with integrated Comm tation nit.

A 32- genovent

Additionally eq ipped with so nd absorbing lining for A-so nd power level red ction of abo t 7 dB at discharge. The flow rate to RDA 31 will be red ced of 5-10 % at same press re rise.

Accessories / Index

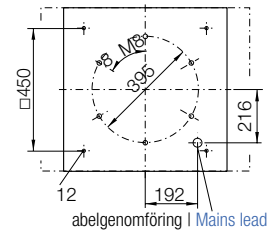
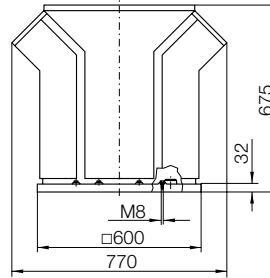
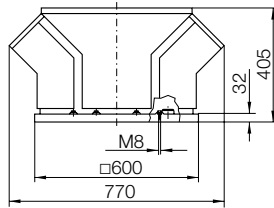
- ② inclination in 5° steps p to 45° possible
- ⑥ A protection for high speed is only active if Dahlander bridge is on place

Mått i mm, vi förbehåller oss rätten till ändringar.

A 31-3535-..

A 32-3535-..

Dimensions in mm, Subject to change.



Tillbehör

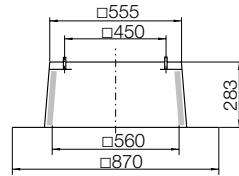
ZBS 01-0056 [Al] 5 kg

ZBS 20-0056 [St] 10 kg

Stos för platta tak

Flat roof

pstand

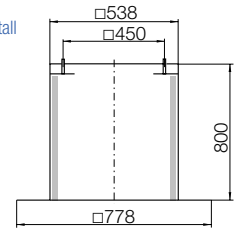


ZBS 23-0056 [St] 14 kg

Stos för platta tak, hög

Flat roof

pstand tall

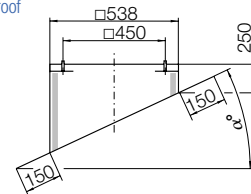


ZBS 09-0056-② [Al] 6 kg

Stos för snedtak

Inclined roof

pstand

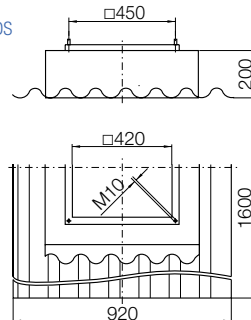


ZBS 11-0056 [GF] 12 kg

Stos för korr gerat tak

Soaker

sheet WDS



Accessories

Z S 01-0056 [Al] 29 kg

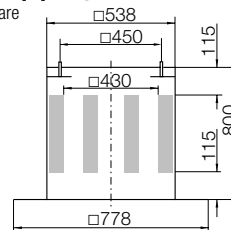
Z S 20-0056 [St] 40 kg

Stoslj ddämpare

Upstand

silencer

①



Z S 09-0056-② [Al] 29 kg

Stoslj ddämpare

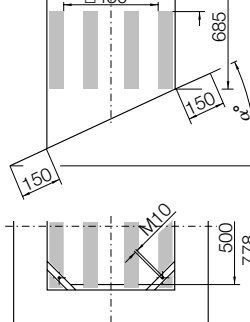
för snedtak

Inclined roof

pstand

silencer

①



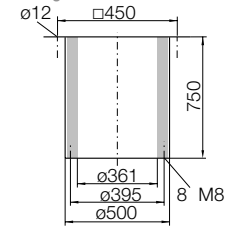
Z 30-0355 17 kg

Lj ddämpare

inloppssida

Inlet

silencer



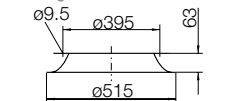
ZK 01-0355 3.5 kg

Inloppskona

med fläns

Flanged

inlet cone

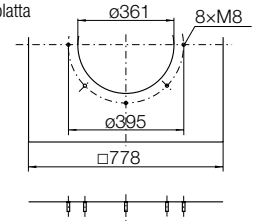


ZBU 01-0056-35 [St] 6 kg

Ansl trningsplatta

Connection

plate

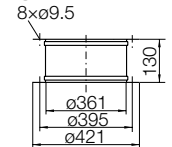


ZKE 11-0355 2.1 kg

D kstos, inlopp

Inlet connection

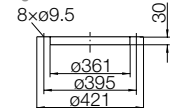
(flexible)



ZKF 11-0355 0.9 kg

Motfläns, inlopp

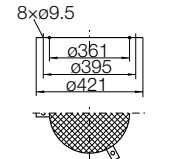
Mating flange



ZSG 04-0355 0.6 kg

Inloppsgaller

Mesh inlet g ard



G-350 [St]

Takgenomföring

inkl. fällbar stosram

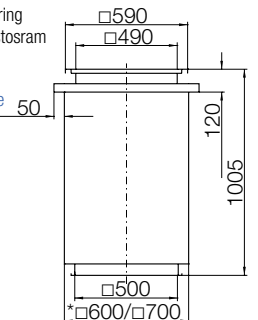
*EI30/EI60

Roof d ct

with Foldable

frame

*EI30/EI60

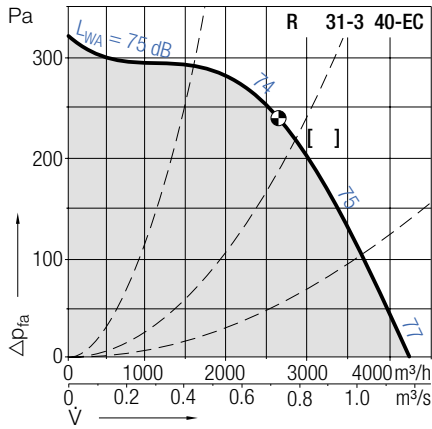


RDA 31-/32-3540

RDA <i>genovent</i>		Tekniska data (V_{max} / L_{WAB} giltig för RDA 31)						Technical Data (V_{max} / L_{WAB} valid to RDA 31)					
r- vor	Pol- tal	Spänning/ ansl tning	Frek- vens	Varvtal	Max. effekt- förbr kning	Märk- ström	Startström/ Märkström	V_{max}	L_{WAB} vid V_{max}	onden- sator	Skyddskl./ Isolationskl.	Vikt 31/32	Media- temp.
C rves	Poles	Voltage/ Connection	Fre- q ency	Speed	Max. power cons mption	Nominal c rrent	Starting/F ll load c rrent	V_{max}	L_{WAB} at V_{max}	Capa- citor	Protection/ Temp. class	Weight 31/32	Media temp.
A 31 32		V	Hz	v min	kW	A		$m^3 h$	dB	μF		kg	$^{\circ}C$
3540 EC• [9]	-	230, 1~	50/60	1260	0.40	1.80	-	4230	77	-	IP44/B	31/-	-20...+40

• (även) steglöst varvtalsreglerbar med spänning | • (also) stepless speed controllable by tension variation

RDA *genovent* Kurvor Curves $\rho_1=1.15 \text{ kg/m}^3$



RDA <i>genovent</i>		Tillbehör				Accessories			
Arbets- brytare	Isolator	Motorskydds- brytare	Transformator 7-stegs	Transformator 5-stegs	Vridtyristor	Varvtalsregl. elektronisk	Varvtalsregl. mikroprocessor	Varvtalsregl. elektronisk	Potentio- meter
		Motor protection nit	Transformer 7 taps	Transformer 5-steps	Speed reg lator electronic	Speed reg lator electronic	Speed reg lator micro processor	Speed controller electronic	Speed reg lator mod le
A 31 32	ESH	ESM	ETO	ETH	EPH	EPA	EPA	EPA	EGH
3540 EC•	21-0030-22	-	-	-	-	-	-	-	EGH 01

RDA 31-/32-3540

RDA genovent



A 31



A 32

Lj dämpat tförande
Noise atten ated version

A 31 genovent

Gebhardt ytterrotormotor med monterat radialfläktkj l. Alla EC-typerna med integrerad komm teringsenhet.

A 32 genovent

Extra lj dabsorberande beklädnad för red cering av lj d-effektnivån med ca 7 dB(A) på avl ftsidan.

Flödet red ceras vid samma tryckökning med 5-10 % jämfört med typ RDA 31.

Tillbehör Index

- ② L trning pp till 45° i steg om 5° är möjlig
- ⑥ En skydds nktion vid högt varvtal garanteras endast om en Dahlander-brygga finns

A 31 genovent

Gebhardt external rotor motor with impeller fitted directly. All EC-types with integrated Comm tation nit.

A 32 genovent

Additionally eq ipped with so nd absorbing lining for A-so nd power level red ction of abo t 7 dB at discharge. The flow rate to RDA 31 will be red ced of 5-10 % at same press re rise.

Accessories Index

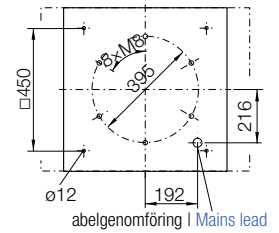
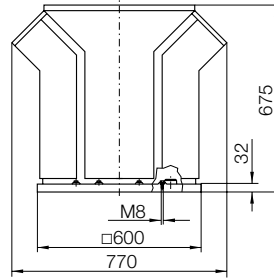
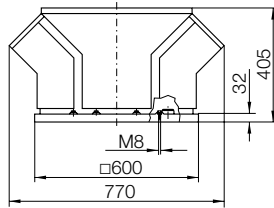
- ② inclination in 5° steps p to 45° possible
- ⑥ A protection for high speed is only active if Dahlander bridge is on place

Mått i mm, vi förbehåller oss rätten till ändringar.

A 31 3540

A 32 3540

Dimensions in mm, Subject to change.



Tillbehör

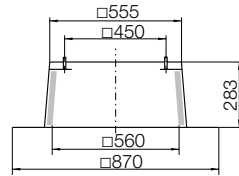
ZBS 01 0056 [Al] 5 kg

ZBS 20 0056 [St] 10 kg

Stos för platta tak

Flat roof

pstand

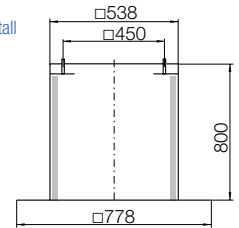


ZBS 23 0056 [St] 14 kg

Stos för platta tak, hög

Flat roof

pstand tall

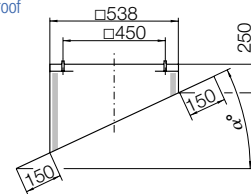


ZBS 09 0056 ② [Al] 6 kg

Stos för snedtak

Inclined roof

pstand

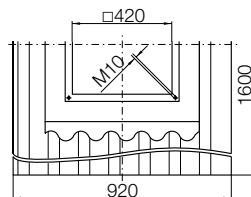
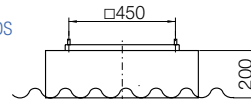


ZBS 11 0056 [GF] 12 kg

Stos för korr gerat tak

Soaker

sheet WDS



Accessories

Z S 01 0056 [Al] 29 kg

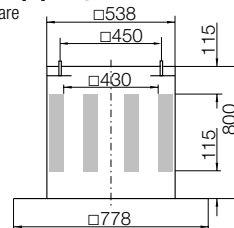
Z S 20 0056 [St] 40 kg

Stoslj ddämpare

Upstand

silencer

①



Z S 09 0056 ② [Al] 29 kg

Stoslj ddämpare

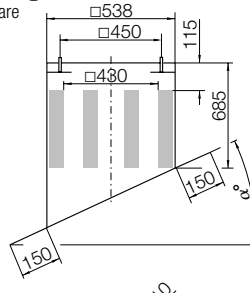
för snedtak

Inclined roof

pstand

silencer

①



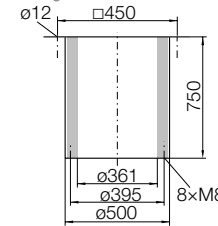
Z 30 0355 17 kg

Lj ddämpare

inloppssida

Inlet

silencer

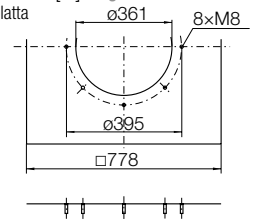


ZBU 01 0056 35 [St] 6 kg

Ansl tringsplatta

Connection

plate

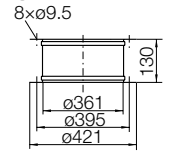


ZKE 11 0355 2 1 kg

D kstos, inlopp

Inlet connection

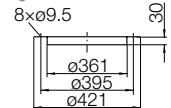
(flexible)



ZKF 11 0355 0 9 kg

Motfläns, inlopp

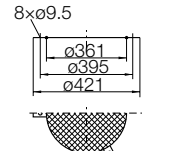
Mating flange



ZSG 04 0355 0 6 kg

Inloppsgaller

Mesh inlet g ard



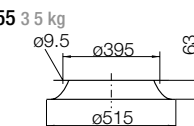
ZK 01 0355 3 5 kg

Inloppskona

med fläns

Flanged

inlet cone



G 350 [St]

Takgenomföring

inkl. fällbar stosram

*EI30/EI60

Roof d ct

with Foldable

frame

*EI30/EI60

