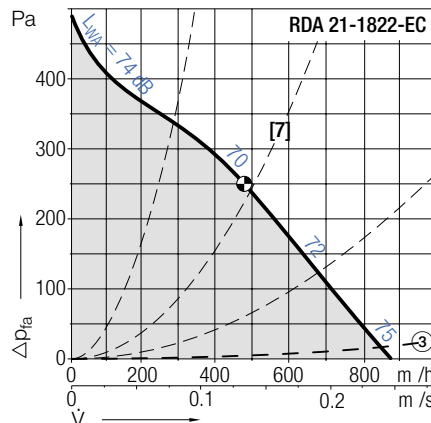
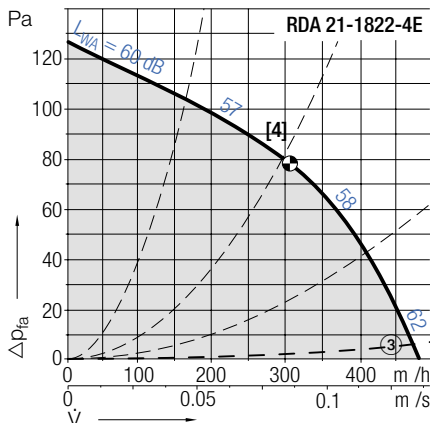
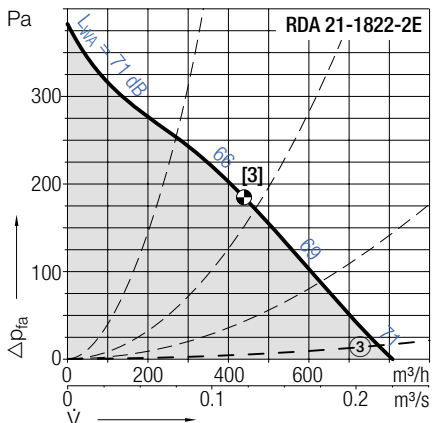
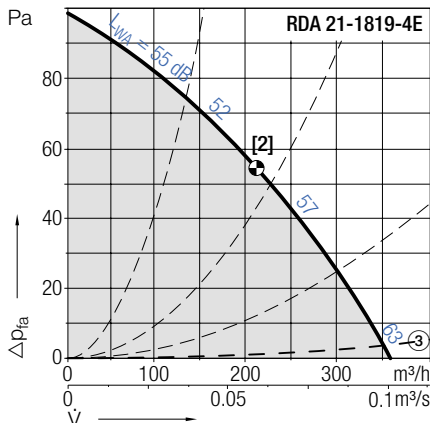
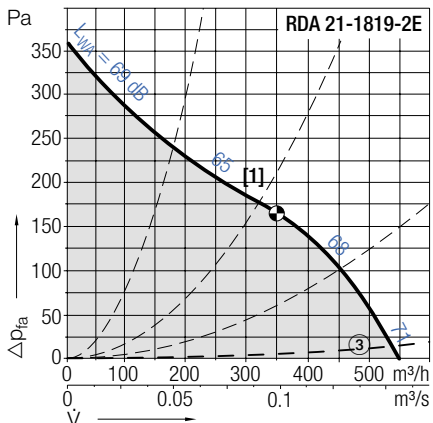


# RDA 21-1819/-1822

RDA genovent		Tekniska data							Technical Data						
r- vor	Pol- tal	Sp nning/ anslutning	Frek- vens	Var tal	Max. effekt- förbrukning	M rk- ström	Startström/ M rkström	$V_{max}$	$L_{WA8}$ vid $V_{max}$	onden- sator	Skyddsklass/ Isolationskl.	Vikt RDA 21	Media- temp.		
Curves	Poles	Voltage/ Connection	Fre- quency	Speed	Max. power consumption	Nominal current	Starting/Full load current	$V_{max}$	$L_{WA8}$ at $V_{max}$	Capa- citor	Protection/ Temp. class	Weight RDA 21	Media temp.		
RDA 21-	V	Hz	v/min	kW	A		m <sup>3</sup> /h	dB	μF	kg	°C				
1819-2E• [1]	2	230, 1~	50	2360	0.063	0.27	1.7	550	71	2.0	IP44/B	5.0	-20...+60		
1819-4E• [2]	4	230, 1~	50	1405	0.04	0.17	1.3	355	63	1.4	IP44/B	5.0	-20...+50		
1822-2E• [3]	2	230, 1~	50	2120	0.10	0.44	1.3	805	71	3.0	IP44/B	5.5	-20...+55		
1822-4E• [4]	4	230, 1~	50	1405	0.054	0.24	1.5	480	62	2.0	IP44/B	5.0	-20...+55		
1822-EC• [7]	-	230, 1~	50/60	2450	0.084	0.76	-	880	75	-	IP44/B	5.0	-20...+60		

• ( ven) steglöst varvtalsreglerbar med sp nning | • (also) stepless speed controllible by tension variation

RDA genovent Kurvor Curves  $\rho_1=1.15 \text{ kg/m}^3$



RDA genovent	Tillbehör					Accessories		
Arbets- brytare	Motorskydds- brytare	Transformator 7-steps	Transformator 5-steps	Vridtyristor	Varvtalsregl. elektronisk	Varvtalsregl. mikroprocessor	Varvtalsregl. elektronisk	
Isolator	Motor protection unit	Transformer 7 taps	Transformer 5-steps	Speed regulator electronic	Speed regulator electronic	Speed regulator micro processor	Speed controller electronic	
RDA 21-	ESH	ESM	ETO	ETH	EPH	EPA	EPA	EPA
1819-2E•	21-0030-22	⑤	10-0018-5E	31-0020-5E	03-0010-5E	-	93-0023-5E	-
1819-4E•	21-0030-22	⑤	10-0018-5E	31-0020-5E	03-0010-5E	-	93-0023-5E	-
1822-2E•	21-0030-22	⑤	10-0018-5E	31-0020-5E	03-0010-5E	03-0060-5E	93-0023-5E	83-0060-5E
1822-4E•	21-0030-22	⑤	10-0018-5E	31-0020-5E	03-0010-5E	-	93-0023-5E	-

# RDA 21-1819/-1822

## RDA *genovent*



### RDA 21- *genovent*

Gebhardt ytterrotormotor med monterat radialfl. kthjul.

#### Tillbehör / Index

- ② Lutning upp till 45° i steg om 5° är möjlig
- ③ Tryckfall i spj. II
- ⑤ På dessa typer av motorer ligger termokontakterna **internt** i serie med lindningen. Skulle motorn uppnå gr nstemperaturen, kopplar kontakterna från motorn omedelbart. Någon motorskyddsbrytare behövs inte.

### RDA 21- *genovent*

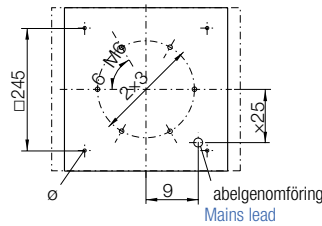
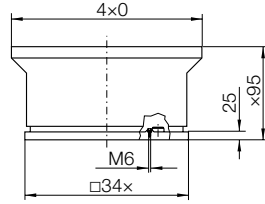
Gebhardt external rotor motor with impeller fitted directly.

#### Accessories / Index

- ② inclination in 5° steps up to 45° possible
- ③ Pressure loss at back draught damper
- ⑤ These fan types have motors with thermal contactsconnected **internally** in series with the winding. They shut down the motor directly a preset temperaturelimit is reached. Motor protection units are not needed.

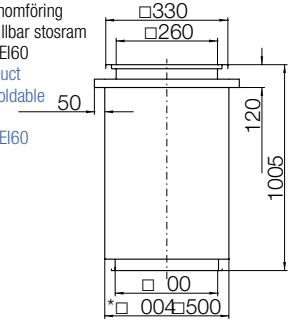
Mått i mm vi förbehåller oss rätten till ändringar.

Dimensions in mm Subject to change.



### G-200 [St]

Takgenomföring inkl. f. llbar stosram \*EI30/EI60  
Roof duct with Foldable frame \*EI30/EI60

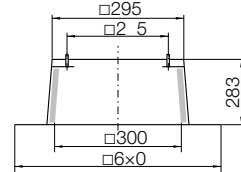


#### Tillbehör

ZBS 01-0031 [Al] 3 kg

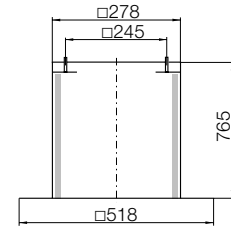
ZBS 20-0031 [St] 6 kg

Stos för platta tak  
Flat roof upstand



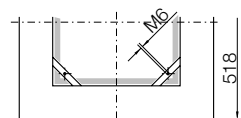
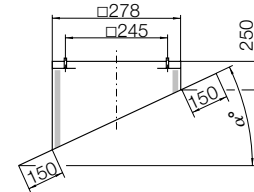
ZBS 23-0031 [St] 10 kg

Stos för platta tak, hög  
Flat roof upstand tall



ZBS 09-0031-② [Al] 4 kg

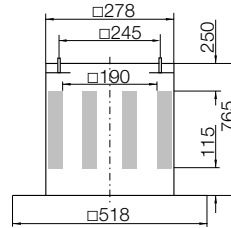
Stos för snedtak  
Inclined roof upstand



ZDS 01-0028 [Al] 11 kg

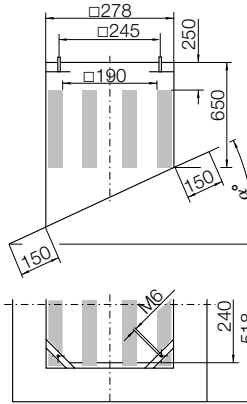
ZDS 20-0028 [St] 15 kg

Stosljudd mpare  
Upstand silencer



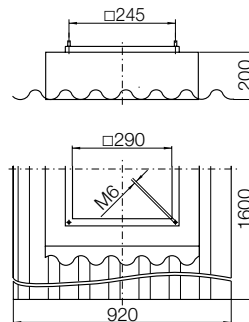
ZDS 09-0028-② [Al] 11 kg

Stosljudd mpare för snedtak  
Inclined roof upstand silencer



ZBS 11-0031 [GF ] 11 kg

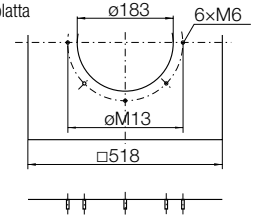
Stos för korrugerat tak  
Soaker sheet WDS



#### Accessories

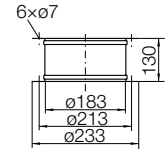
ZBU 01-0028-18 [St] 2 kg

Anslutningsplatta  
Connection plate



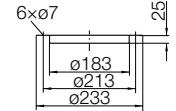
ZKE 11-0180 0.7 kg

Dukstos, inlopp  
Inlet connection (flexible)



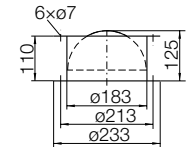
ZKF 11-0180 0.3 kg

Motfl ns, inlopp  
Mating flange



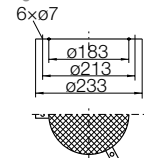
ZLK 01-0180 4 kg

Sj lvst ngande backspj II  
Automatic shutter



ZSG 04-0180 0.1 kg

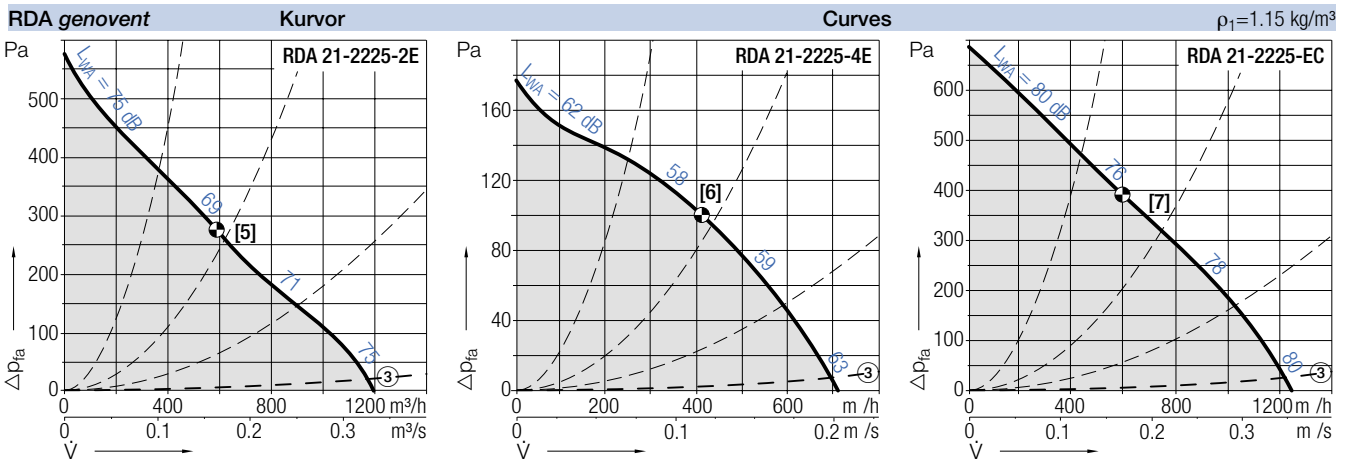
Inloppsgaller  
Mesh inlet guard



# RDA 21-2225

RDA genovent		Tekniska data							Technical Data					
ur- vor	Pol- tal	Sp nning/ anslutning	Frek- vens	Varvtal	Max. effekt- förbrukning	M rk- ström	Startström/ M rkström	$V_{max}$	$L_{WA8}$ vid $V_{max}$	onden- sator	Skyddsklass/ Isolationskl.	Vikt RDA 21	Media- temp.	
Curves	Poles	Voltage/ Connection	Fre- quency	Speed	Max. power consumption	Nominal current	Starting/Full load current	$V_{max}$	$L_{WA8}$ at $V_{max}$	Capa- citor	Protection/ Temp. class	Weight RDA 21	Media temp.	
RDA 21-	V	Hz	v/min	kW	A	m <sup>3</sup> /h	dB	$\mu$ F	kg	°C				
2225-2E• [5]	2	230, 1~	50	2230	0.173	0.76	1.3	1200	75	5.0	IP44/B	6.5	-20...+60	
2225-4E• [6]	4	230, 1~	50	1390	0.055	0.24	1.9	705	63	2.0	IP44/B	6.0	-20...+60	
2225-EC• [7]	-	230, 1~	50/60	2620	0.17	1.42	-	1240	80	-	IP44/B	8.0	-20...+60	

• ( ven) steglöst varvtalsreglerbar med sp nning | • (also) steplless speed controllabale by tension variation



RDA genovent		Tillbehör					Accessories			
Arbets- brytare	Motorskydds- brytare	Transformator 7-stegs	Transformator 5-stegs	Vridtyristor	Varvtalsregl. elektronisk	Varvtalsregl. mikroprocessor	Varvtalsregl. elektronisk	Potentio- meter		
Isolator	Motor protection unit	Transformer 7 taps	Transformer 5-steps	Speed regulator electronic	Speed regulator electronic	Speed regulator micro processor	Speed controller electronic	Speed regulator module		
RDA 21-	ESH	ESM	ETO	ETH	EPH	EPA	EPA	EPA	EGH	
2225-2E•	21-0030-22	⑤	10-0018-5E	31-0020-5E	03-0010-5E	03-0060-5E	93-0023-5E	83-0060-5E	-	
2225-4E•	21-0030-22	⑤	10-0018-5E	31-0020-5E	03-0010-5E	-	93-0023-5E	-	-	
2225-EC•	21-0030-22	-	-	-	-	-	-	-	EGH 01	

# RDA 21-2225

## RDA *genovent*



### RDA 21- *genovent*

Gebhardt ytterrotormotor med monterat radialfl. kthjul.

#### Tillbehör / Index

- ② Lutning upp till 45° i steg om 5° är möjlig
- ③ Tryckfall i spj. II
- ⑤ På dessa typer av motorer ligger termokontakterna **internt** i serie med lindningen. Skulle motorn uppnå gr nstemperaturen, kopplar kontakterna från motorn omedelbart. Någon motorskyddsbrytare behövs inte.

### RDA 21- *genovent*

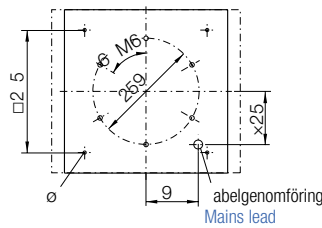
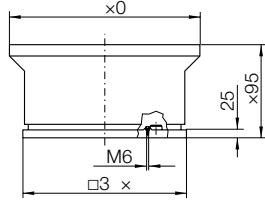
Gebhardt external rotor motor with impeller fitted directly.

#### Accessories / Index

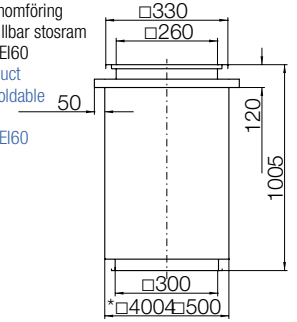
- ② inclination in 5° steps up to 45° possible
- ③ Pressure loss at back draught damper
- ⑤ These fan types have motors with thermal contactconnected **internally** in series with the winding. They shut down the motor directly a preset temperaturelimit is reached. Motor protection units are not needed.

Mått i mm, vi förbehåller oss rätten till ändringar.

Dimensions in mm, Subject to change.



**G-200** [St]  
Takgenomföring  
inkl. f. llbar stosram  
\*EI30/EI60  
Roof duct  
with Foldable  
frame  
\*EI30/EI60

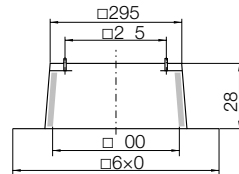


#### Tillbehör

**ZBS 01-0031** [Al] 3 kg

**ZBS 20-0031** [St] 6 kg

Stos för platta tak  
Flat roof upstand

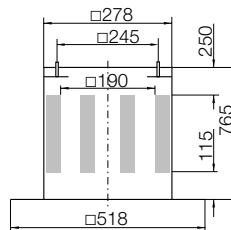


#### Accessories

**ZDS 01-0028** [Al] 11 kg

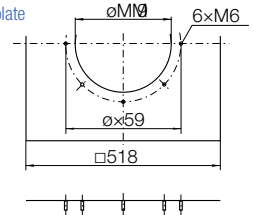
**ZDS 20-0028** [St] 15 kg

Stosljudd mpare  
Upstand silencer



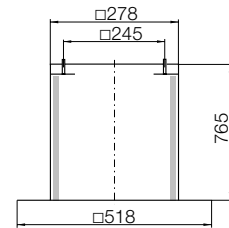
**ZBU 01-0028-22** [St] 2 kg

Anslutningsplatta  
Connection plate



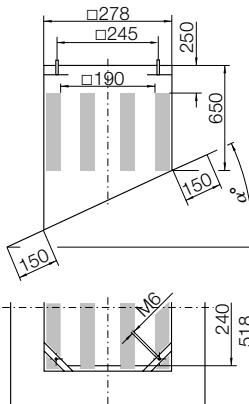
**ZBS 23-0031** [St] 10 kg

Stos för platta tak, hög  
Flat roof upstand tall



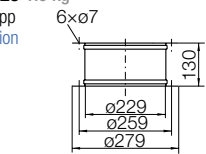
**ZDS 09-0028-②** [Al] 11 kg

Stosljudd mpare för snedtak  
Inclined roof upstand silencer



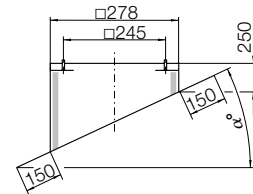
**ZKE 13-0225** 1.0 kg

Dukstos, inlopp  
Inlet connection  
(flexible)



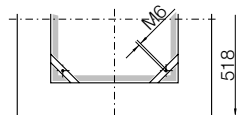
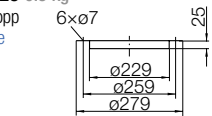
**ZBS 09-0031-②** [Al] 4 kg

Stos för snedtak  
Inclined roof upstand



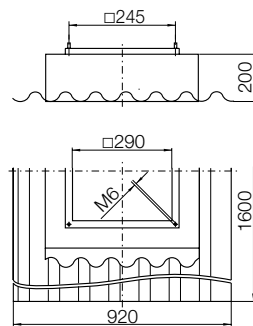
**ZKF 13-0225** 0.5 kg

Motfl ns, inlopp  
Mating flange



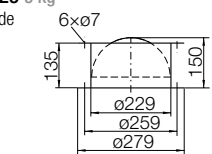
**ZBS 11-0031** [GF ] 11 kg

Stos för korrugerat tak  
Soaker sheet WDS



**ZLK 03-0225** 5 kg

Sj lvst ngande  
backspj. II  
Automatic  
shutter



**ZSG 04-0225** 0.2 kg

Inloppsgaller  
Mesh inlet guard

